

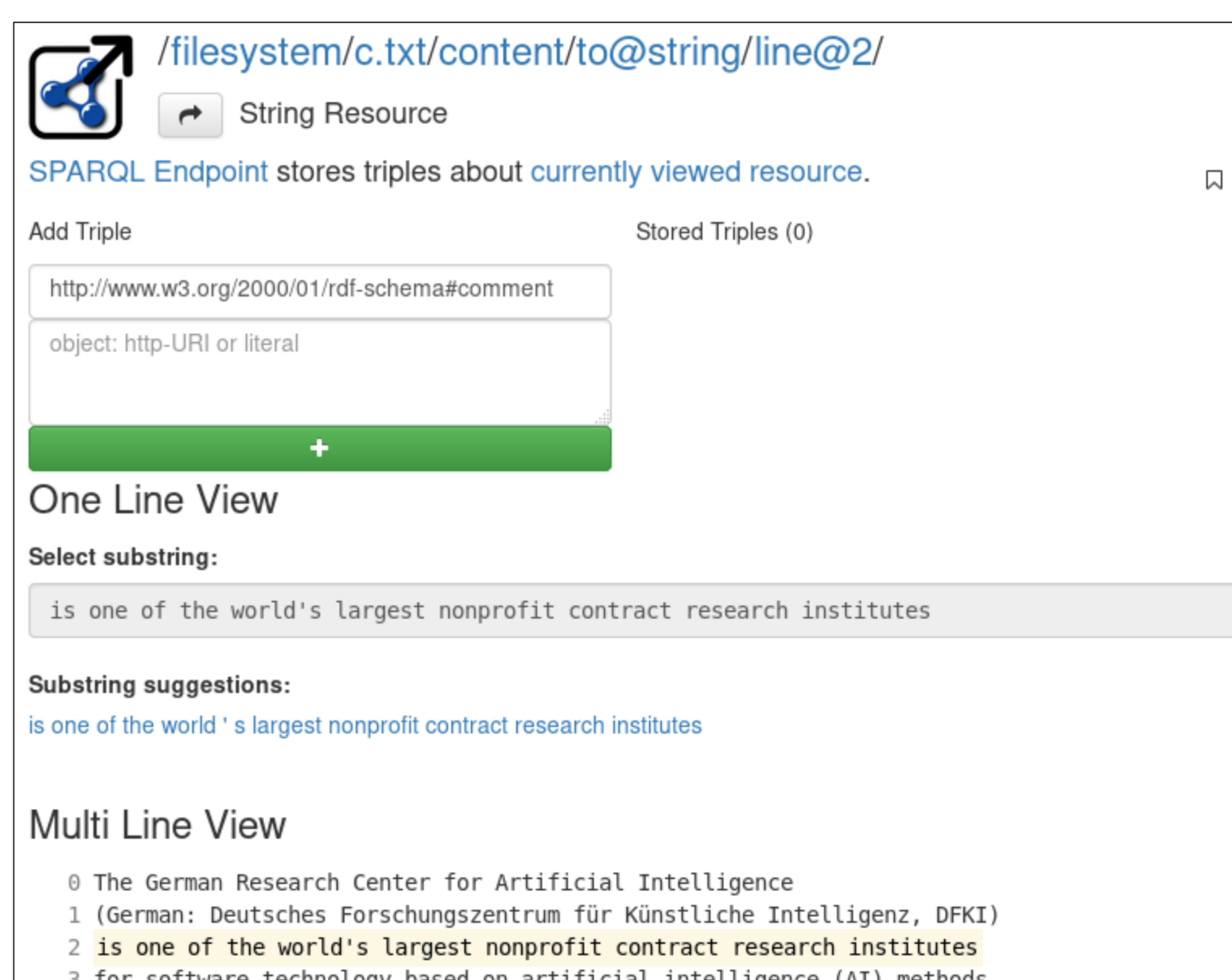
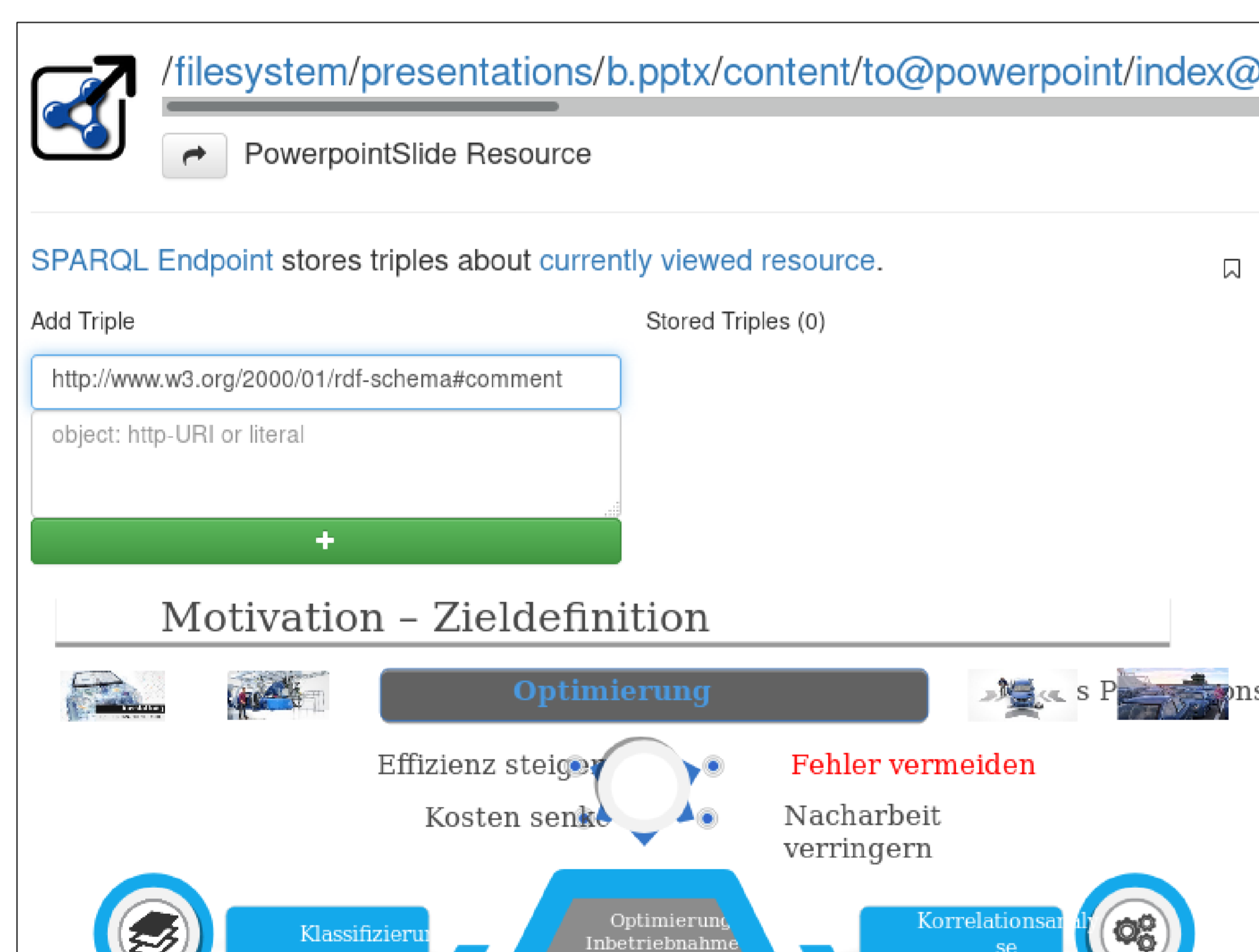
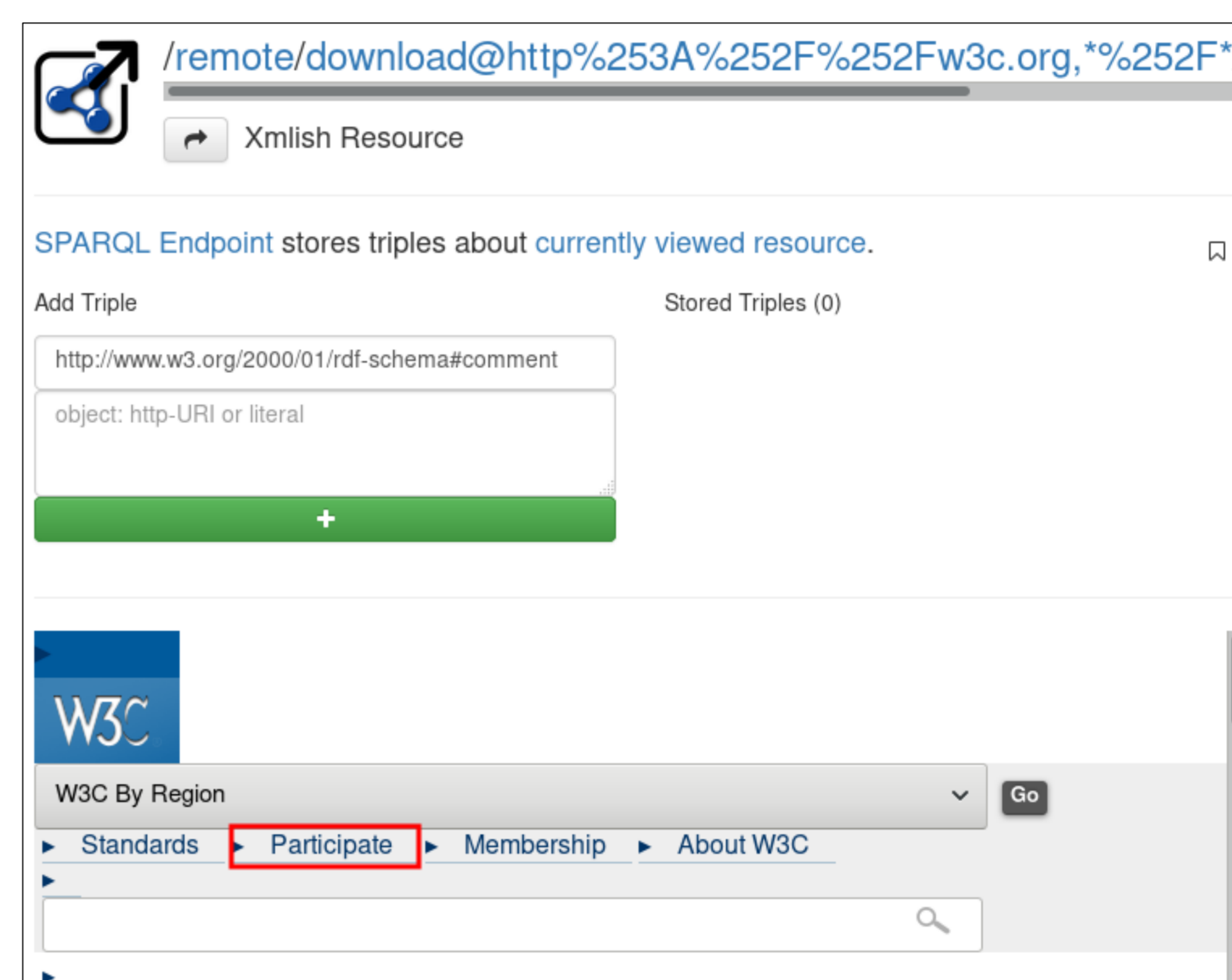
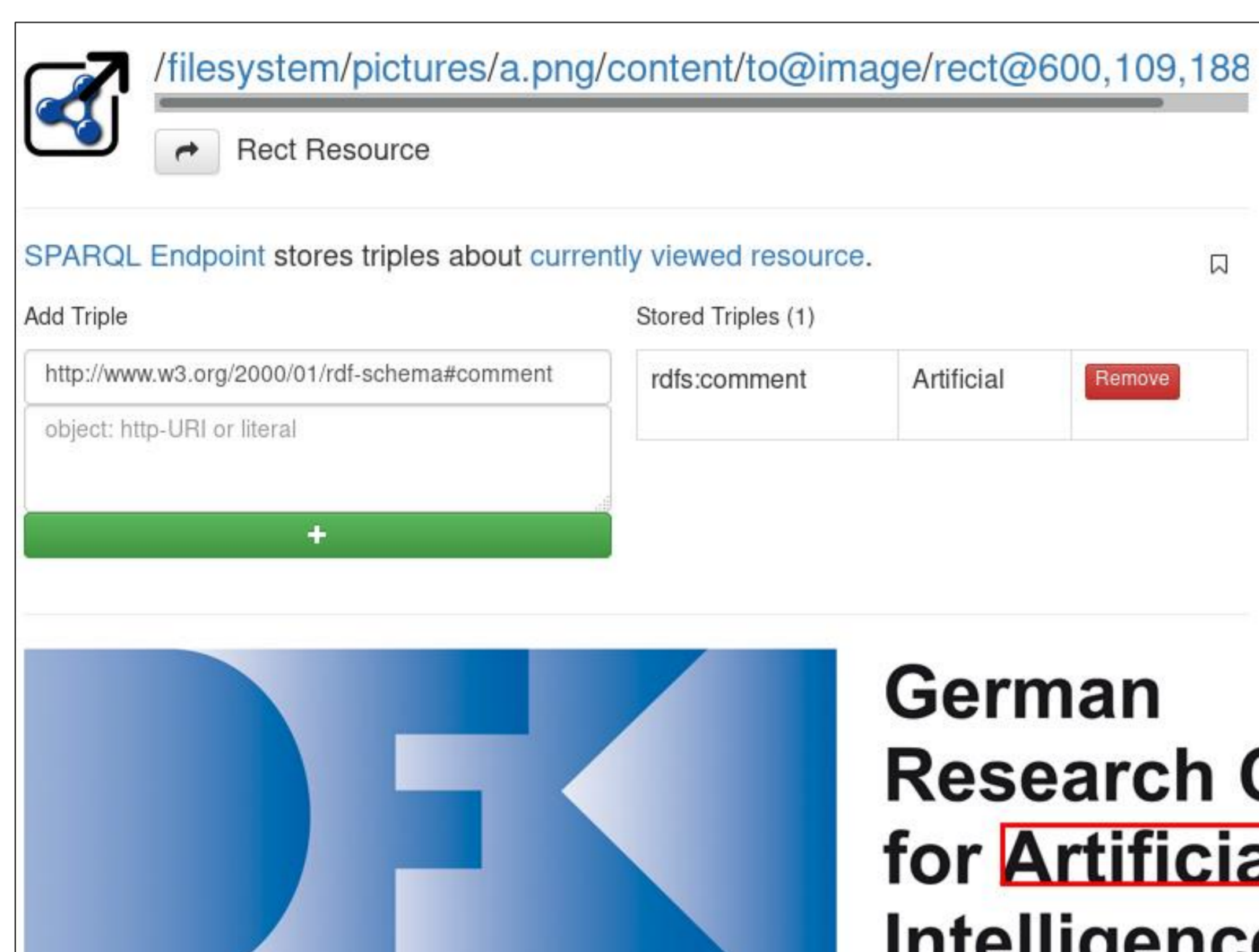
Abstract

Deep Linking is the process of referring to a specific piece of web content. Although users can browse their files in desktop environments, they are unable to directly traverse deeper into their content using deep links. In order to solve this issue, we demonstrate "DeepLinker", a tool which generates and interprets deep links to desktop resources, thus enabling the reference to a certain location within a file using a simple hyperlink. By default, the service responds with an HTML representation of the resource along with further links to follow. Additionally, we allow the use of RDF to interlink our deep links with other resources.

Introduction

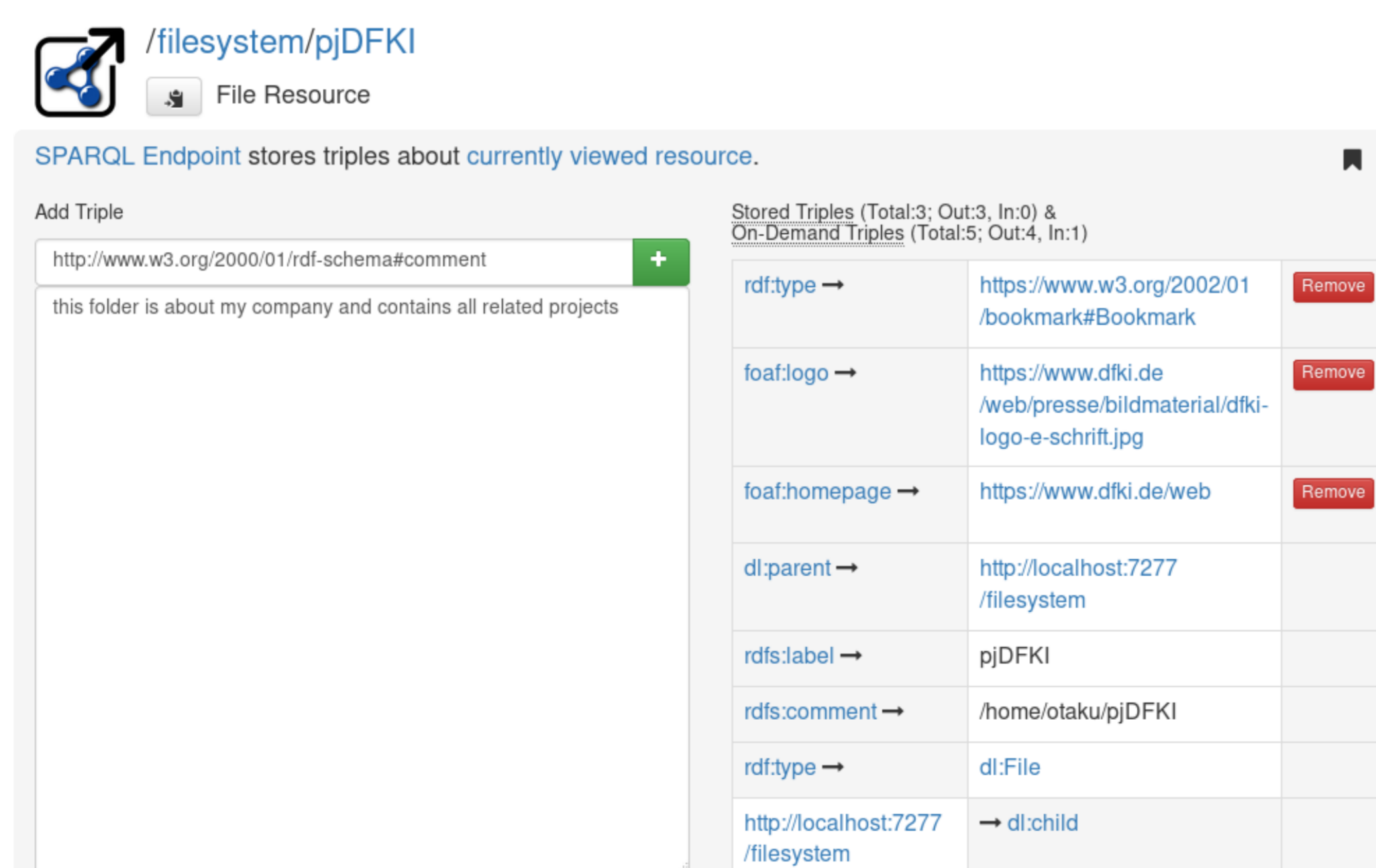
- Deep Linking
 - generating hyperlinks to refer to a specific piece of web content
- on the desktop
 - users *cannot* refer to certain locations deep inside their resources

DeepLinker makes it possible to refer to a certain location within a file using a simple hyperlink



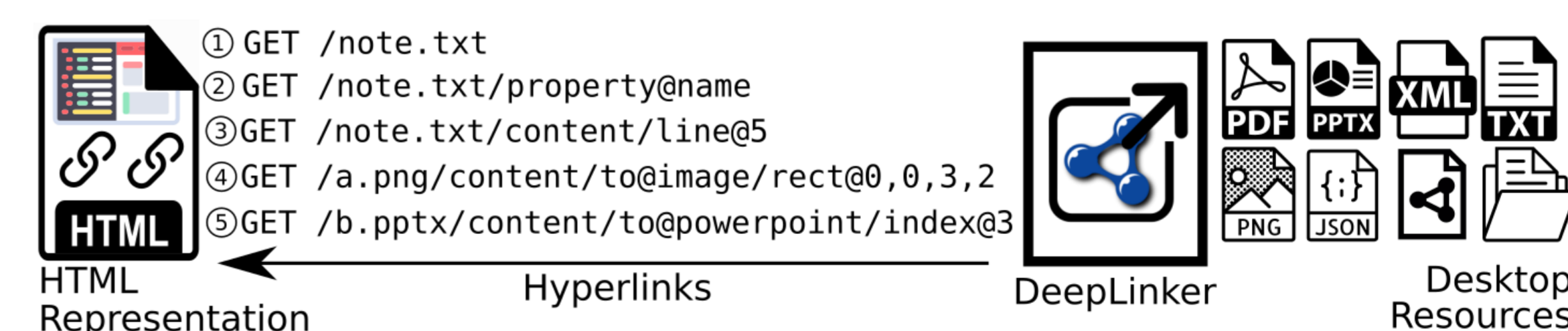
Annotations via RDF

- make statements about deep links
- store and retrieve RDF using a SPARQL endpoint
- add and list RDF statements using a form



Architecture

- DeepLinker browses usual desktop resources by using various path segments
- returns HTML representation of the fragment with further links to follow



<http://www.dfki.uni-kl.de/~mschroeder/demo/deeplinker/>



Contact:
Msc. Markus Schröder
Researcher – Smart Data & Knowledge Services
German Research Center for Artificial Intelligence
DFKI GmbH
Phone: +49 631 20575-2070
Mail: markus.schroeder@dfki.de
Website: <http://www.dfki.uni-kl.de/~mschroeder/>

Acknowledgement

Parts of this work have been funded by the German Federal Ministry of Food and Agriculture in the project SDS (2815708615) and by the DFG in the project Managed Forgetting (DE 420/19-1).