



Semantic Web and BPM

Christian Fillies

Fillies & Friends Consulting

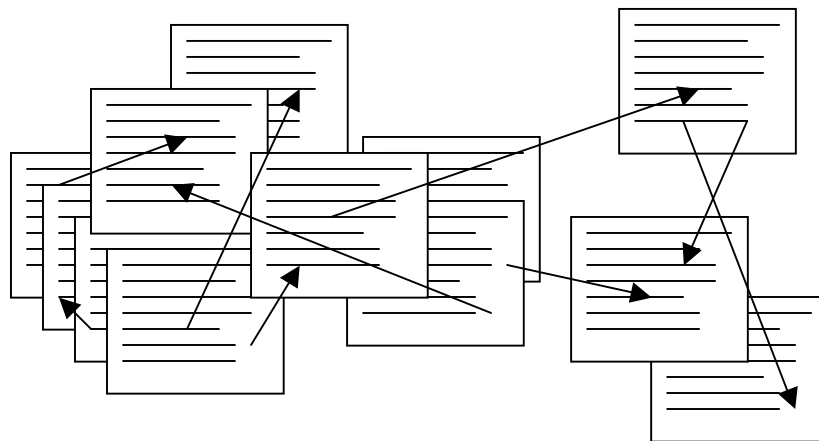
Dr. Frauke Weichhardt

beratung im netz

Gabriele Koch-Süwer

Gedilan GmbH

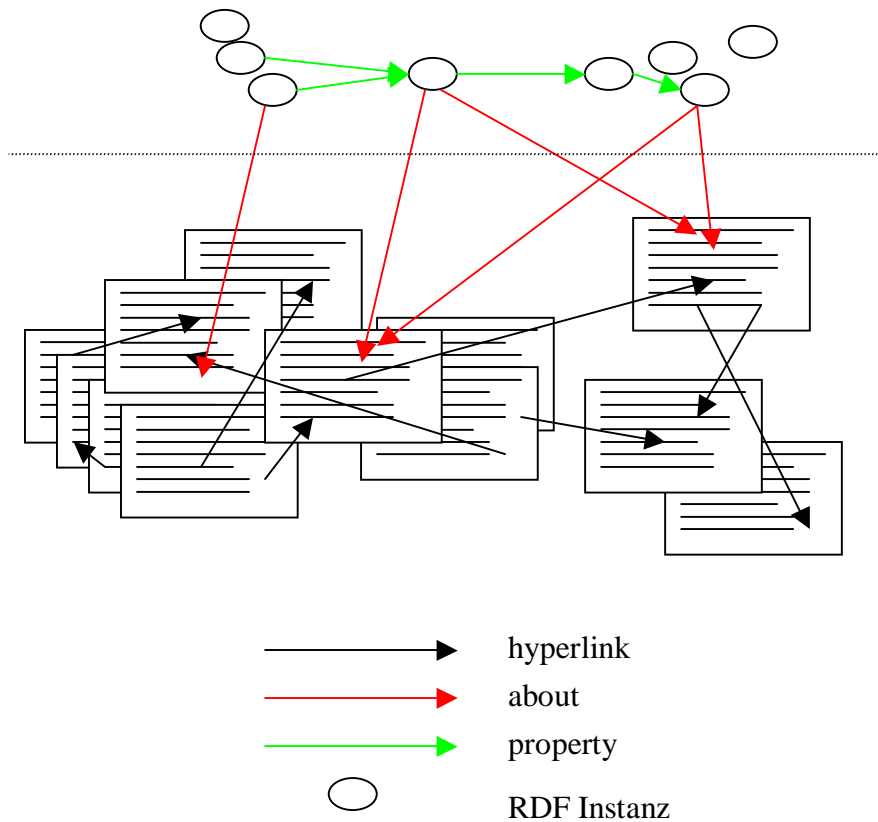
The HTML Web



—————> Hyperlink

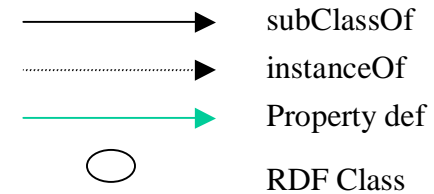
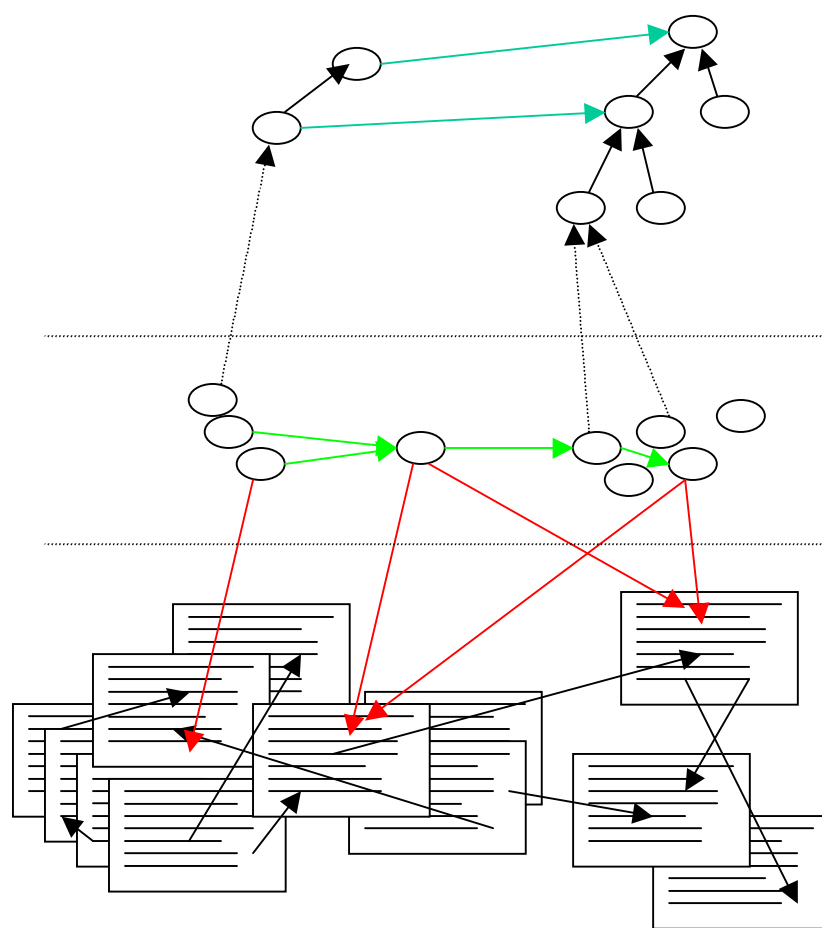
- Basically text and images
- Restricted search capabilities
- Content of a page only accessible after opening

The Semantic Web (RDF)



- Model of the page contents is attached to each page
- Finding and comparing pages with related topics
- Models have hyperlinks to other models

The Semantic Web (RDFS, OIL, DAML)



- Definitions of common language and concepts
- Intelligent inference engines and agents
- No global repository
- Reference Ontologies

RDF(S): Background



- Intended for representation “meta-data”, basis for Web-based ontology-language
- W3C Recommendation
- “Because it is already there”
 - pushed hard by W3C (T.B-L)
 - \$ 80M DAML program of DoD
 - 20 M € program of EU in FP5 (2001)
 - Foundation of eEurope Program in FP6

Who will enter all that data?

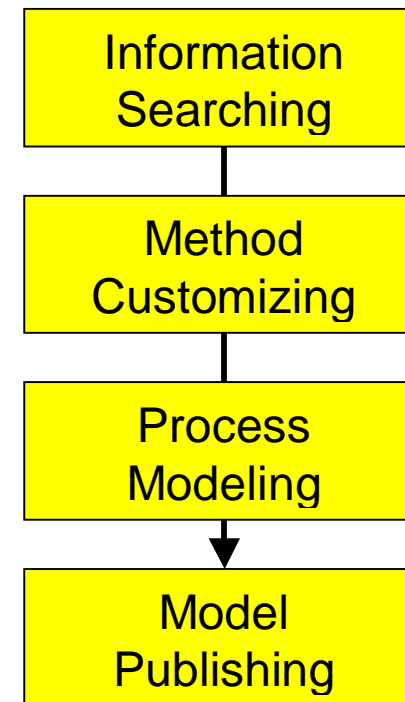


- Process and knowledge management folks
- Organizations, which create standards
- Everybody, who wants to found on the semantic web

(question brought up already by D.B. Lenat)

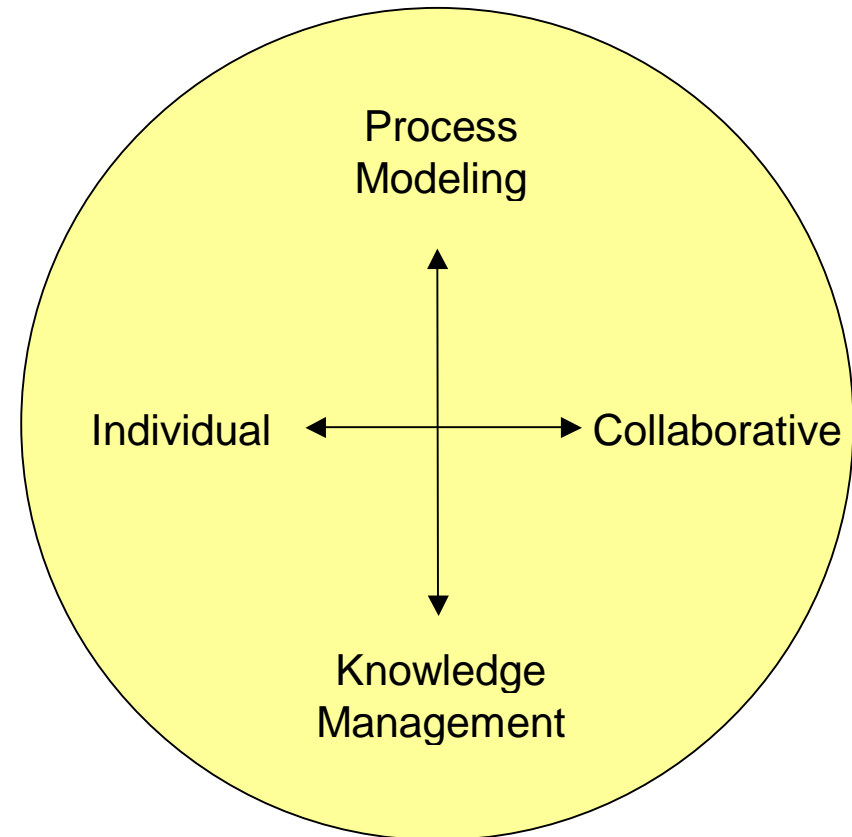
BPM with the Semantic Web

- Using the resources
 - Specialize information models
 - Process models
- Publish the models for reuse
 - Intranet
 - Internet



Ambient Tools for the Semantic Web

- Easy to use
- Low Cost
- Integrated in MS-Office
- Ontology editor
- Indexing service
- Method independent
- Static and dynamic modeling



SemTalk™

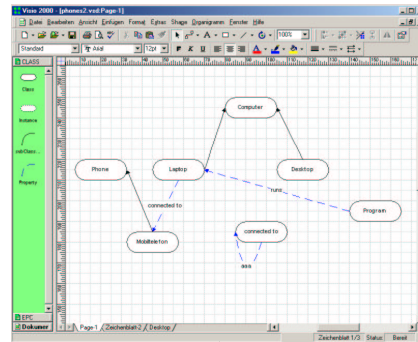
VISIO

+

GUI

+

Logic



VBA / COM

Graphical Browser

COM

K-Model Engine

XML

RDF(S)

XML

RDF(S) Servers

- Navigation and Consistency in Visio
- Model Objects for Visio Shapes
- RDFS Classes for Model Objects
- GRID:Hyper-linked Models

Current BPM Tools

	Visio	ARIS	SA2001	Bonapart	Alphabet	SemTalk
Symbols	+	+	+	+	+	+
Model-objects	-	+	+	+	+	+
Symbol Types	+	-	+	-	+	+
Classes	-	-	+--	+--	-	+
Diagram Types	+	-	+	-	+	+
Graph. Meta model	-	-	-	+--	-	+
Consistency	-	-	VB Rules	Built in	?	Model
Methods	many	One with filters	many	one	many	many

SemTalk™ Plug-In Architecture

BPM: EPC, CSA PROMET
Data Warehouse
DMS and KMS
CRM
E-Business Prozesses
MS Office
EAI: BizTalk
eDefense
eHealth

Generic Object Modeling
RDFS, OIL, DAML-O

The Knowledge Web



- The Semantic Web describes the semantics of any kind of resources
- Appliances that are aware of semantics have knowledge!
- Smart applications can be built easily using SemTalk™ inference engine runtime for COM of Java.